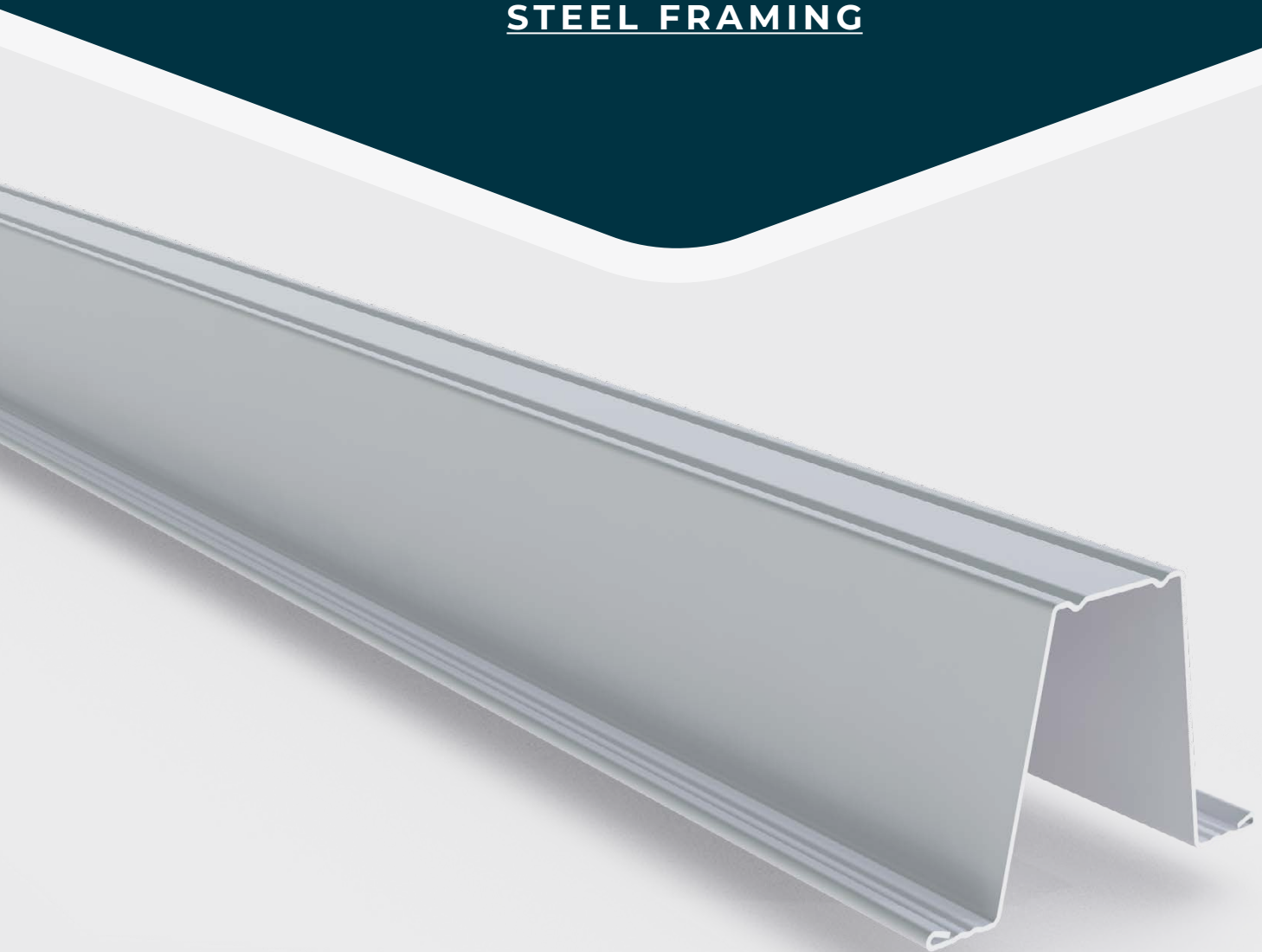


**MATRIX**  
STEEL

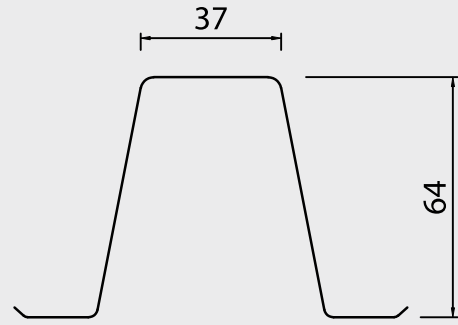
# Top Hat Section



STEEL FRAMING



# Top Hat Sections



## OVERVIEW

<b>Material</b>	Zincalume®
<b>Gauges</b>	0.75 BMT, 1.0 BMT & 1.2 BMT
<b>Useage</b>	Wall girts for garage, shed or carport

Structural metal Top Hat Sections are a cost effective alternative to conventional purlins or timber on smaller type buildings like garages and small sheds.

They are ideal to be used for wall girts and roof supports. They are fixed with the use of 14 x 22 metal TEK screws onto the columns and rafters through the bottom flange of the Top Hat Sections. They have excellent spanning capabilities and are lap joined on longer runs.

Matrix Steel Top Hat Sections are available in 3 different thicknesses allowing them to be used in many different applications to suit your requirements. They are rollformed cut to length in thicknesses of 0.75 BMT, 1.0 BMT & 1.2 BMT. Made from hi-tensile Zincalume so you know they will stand the test of time.

They comply with the Australian standards.

## BATTEN / GIRT FIXING TABLE

BAY SIZE METRES	N2 / N3	C1 / N4	C2	C3
3.0 BAY	2 x 12 / 14 Teks	2 x 12 / 14 Teks	2 x 12 / 14 Teks	3 x 12 / 14 Teks
End Span	2 x 12 / 14 Teks	2 x 12 / 14 Teks	3 x 12 / 14 Teks	4 x 12 / 14 Teks

## PURLIN AND GIRTS SPAN TABLE DOUBLE LAPPED (3.0 M BAYS)

	WALL GIRTS	ROOF PURLINS
N2	TH64 .75 @ 1350	CTS TH64 .75 @ 1200 CTS
N3	TH64 .75 @ 1350	CTS TH64 .75 @ 1200 CTS
C1 / N4	TH64 1.0 @ 1350	CTS TH64 1.0 @ 1200 CTS
C2	TH64 1.0 @ 1050	CTS TH64 1.0 @ 900 CTS
C3	TH64 1.2 @ 800	CTS TH64 1.0 @ 800 CTS

## PURLIN AND GIRTS SPAN TABLE DOUBLE LAPPED (3.5 M BAYS)

	WALL GIRTS	ROOF PURLINS
N2	TH64 .75 @ 1250 CTS	TH64 .75 @ 1200 CTS
N3	TH64 .75 @ 1100 CTS	TH64 .75 @ 900 CTS
C1 / N4	TH64 1.2 @ 1200 CTS	TH64 1.2 @ 1050 CTS
C2	TH64 1.2 @ 1100 CTS	TH64 1.2 @ 900 CTS
C3	N/A	N/A

# Why make it a Matrix?

Matrix Steel provides a full range of products for all building projects – commercial or residential. Locally manufactured products using only genuine BlueScope Steel in COLORBOND® colours, you can trust a Matrix Steel purchase.



## SUPPLY AND FIT

As specialists in all things steel, we can assist with your entire project from start to finish. From ideas to advice, installation and everything in between, Matrix Steel offers a full range of services to make projects a breeze.



## FREE EXPERT ADVICE

Not sure where to start? Our trained experts can answer any questions, no matter how big or small. You can call your local Matrix Steel team for advice, or request a free quote anytime.



## SUPERIOR QUALITY AND PERFORMANCE

Manufactured right here in Australia from only the best BlueScope Steel, our tried and tested products are guaranteed to last well into the future.

**Ph. 1300 GO MATRIX (1300 466 287)**  
[matrixsteel.au](http://matrixsteel.au)

# MATRIX STEEL

Ph. 1300 GO MATRIX (1300 466 287)  
[matrixsteel.au](http://matrixsteel.au)

## GLADSTONE

94 Hanson Road,  
Gladstone

## BUNDABERG

73 Princess Street,  
Bundaberg

## GYMPIE

3/23 Pinewood Ave,  
Gympie

## HERVEY BAY

1/83 Beach Road,  
Hervey Bay

## SUNSHINE COAST

17 Fishermans Road,  
Maroochydore

## BRISBANE

1 Robart Court,  
Narangba

## LISMORE

9-11 Habib Drive,  
South Lismore

Make it a MATRIX.